



Syracuse Area Landmark Theatre
362 S. Salina Street
PO Box 1400
Syracuse, NY 13201-1400

Theatre Offices: (315) 475-7979
Box Office: (315) 475-7980
Fax: (315) 475-7993

HOUSE AND STAGE SPECS

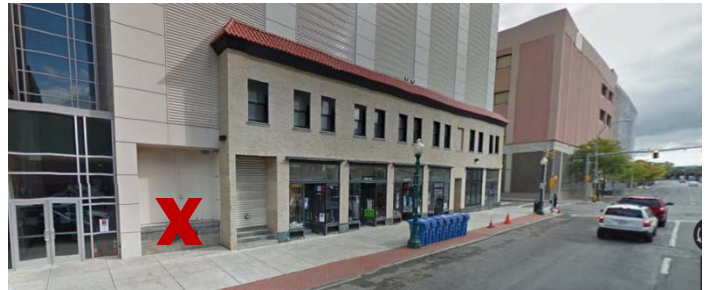
DIRECTIONS:

From New York State Thruway: I-90 exit 36 to I-81 South into the city: Take Exit 19, Clinton/Salina Street exit. Clinton Street (one way) runs directly behind the theatre (left side of the 300 block); park on the street in loading zone or at barricaded parking spots, if previously arranged with theatre.

From I-81 North (approaching the south side of Syracuse): Exit 18, Harrison/Adams Street; follow Adams Street to Almond Street; left onto Erie Boulevard; go 7 blocks and take left onto Clinton Street (one way); up to the left side of the 300 block; park on the street in loading zone or at barricaded parking spots, if previously arranged with theatre.

LOADING DOOR AND BACKSTAGE ENTRANCE:

South Clinton Street between Jefferson and Fayette Streets.



STAGE SPECIFICATIONS AND GUIDELINES:

DIMENSIONS (all in feet):

Proscenium 51'-6" wide by 29' high

Stage Depth (downstage edge to upstage wall) 48'

Main Curtain to upstage wall 44'

Fire Curtain to upstage wall 45'

Pipe Travel 74'

Wing Space:

Edge of proscenium to SR 37'11"

Edge of proscenium to SL 13'8"

FIRE CURTAIN AND TRAVEL SPACES MUST BE KEPT CLEAR AT ALL TIMES.

ORCHESTRA PIT:

Crescent shaped, 40' wide by average 10' deep.

Pit travels from stage level to basement.

Pit available for orchestra, storage or seating.

LOADING:

One loading door - Dock build out to trucks level with stage, loading door: 9'6" high x 10' wide.

POWER:

4 - 400 amp 120/208 volt disconnect USR

1 - 200 amp 120/208 volt disconnect SL

1 - 100 amp 120/208 volt disconnect in trap room

1 - 200 amp 120/208 volt disconnect at fly level SL

1 - 200 amp 120/208 volt disconnect at grid iron level

1 - 100 amp 120/208 volt disconnect in front of house attic

FLY SYSTEM:

Grid Height: 75'

Batten High Trim: 74-6'

Batten Length: 60'

Arbor Capacity: 1,600 lbs.

- Fire curtain and motorized rigging
- House curtain and manual lattice track rigging, stage right
- Lock rail stage right
- 78 single-purchase manual counterweight sets, 6 inches on center
- Available counterweight: 25,000 pounds.

FRONT OF HOUSE RIGGING

- Strong points in the forestage area and above the seats for chain hoist rigging. Over seat location provides a nominal 45 degree lighting angle.
- The support of any loads of equipment in addition to that which can be supported by pipe arbors
- within the defined limits, including additional imposed loads on beams, channels and other
- structural members in the fly space must be approved in writing, in advance, by the Theatre.
- Normal state of the stage is with house goods hung.
- Any changes in house hung must be restored on strike call.

SOFT GOODS:

- Main Curtain, flown.
- 6 Borders: 10' H by 59' W
- 12 Legs: 30' H by 10' W
- 1 Black Scrim: 30' H by 50'W
- 1 White Scrim: 30'H by 50' W
- 1 Cyc muslin

PROJECTION SCREENS:

- Perforated Front Projection Framed Screen 30'High x 53' Wide
- Solid Front Projection Framed Screen 18'High x 43' Wide

LIGHTING:

Basic

FOLLOW SPOTS:

2 - ROBERT JULIAT in projection booth RENTAL: \$150.00 each/day

INTERCOM:

Stage video and sound feed from under balcony to all dressing rooms, wardrobe rooms, Green Room and Production office. Paging Mic to monitors stage Right and in Production office

SOUND/MIX POSITION:

No house install, mix position is located House left center, 120' to back wall – approx 10x20. Snake run can be snug along seats in aisle.

PYROTECHNICS:

All flash powder, explosive, fire, lasers, or any dangerous devices or effects must meet national and local safety codes. Consult with House Operations Manager well in advance of your event. Arrangements must be made at the

time of license application with the City of Syracuse Fire and Police Departments and have the approval of the Landmark Theatre.

STAGE HANDS:

I.A.T.S.E. Local 9

Contact: Keith Russell/Business Agent

PO Box 617

Syracuse, NY 13201

Phone: 315-481-6327

Karuss01@aol.com

DRESSING/SUPPORT ROOMS:

Basement Level

- 1x Musicians room
- 1x Conductors dressing room
- 1x female bathroom
- 1x male bathroom
- 3x visiting production offices
- 1x Wardrobe/Laundry Room, equipped with 3 washer/3 dryer

Main stage level

- Stage unisex toilet

2nd Floor

- 2x Star dressing rooms (201-202, suitable for 1-2 persons)
- 2x Principal dressing rooms (203-204, suitable for 4 persons)
- 1x Chorus room (205, suitable for 20)
- 1x Chorus room (206, suitable for 10)
- 1x Green room w/ small kitchen

3rdFloor

- 2x Principal dressing rooms (301-302, suitable for 4 persons)
- 1x Chorus room (303, suitable for 7 persons)

THEATER OPERATIONS STAFF:

Mike Intaglietta, General Manager

mike@landmarktheatre.org

315.432.4420

Danielle Bianco

Special Events Manager

danielle@landmarktheatre.org

315.432.4425

Gregg Discenza

Facilities Manager

gregg@landmarktheatre.org

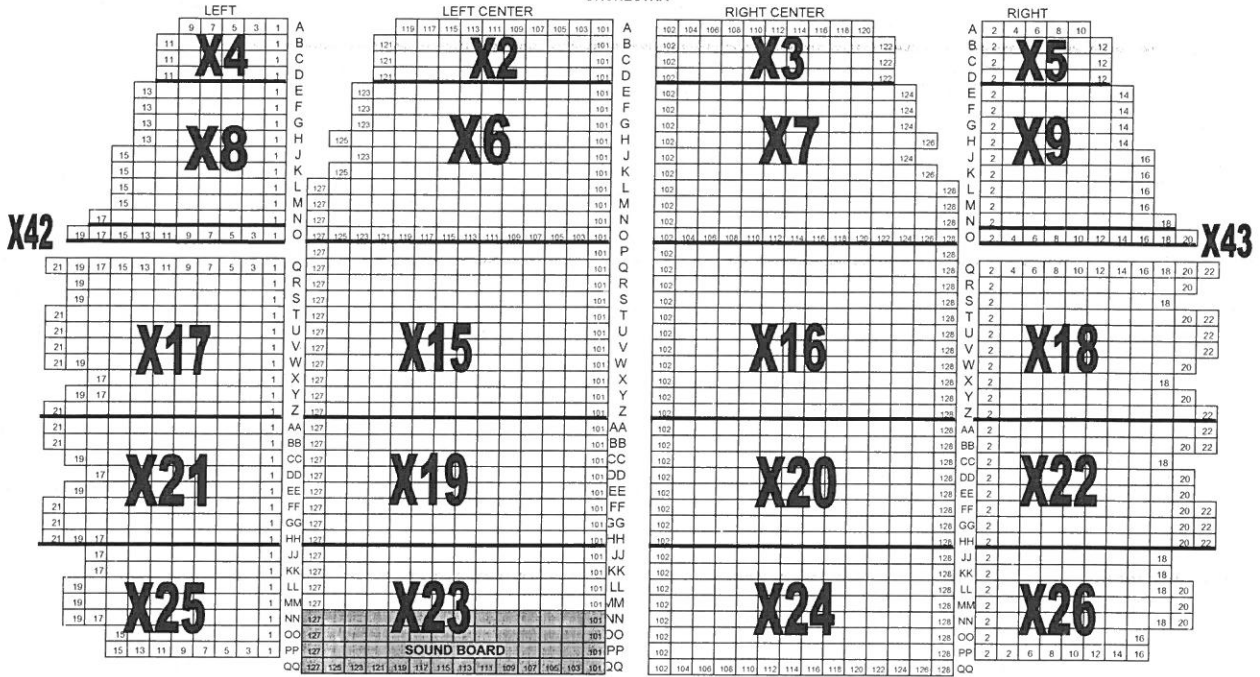
315.432.4424

STAGE

PITT - 36
 ORCHESTRA - 1734
 HANDICAP - 20
 BALCONY - 1044

YY	1	2	3	4	5	6	7	8	9	10	11	12	13	14	15	16	17	18	YY
ZZ	1	2	3	4	5	6	7	8	9	10	11	12	13	14	15	16	17	18	ZZ

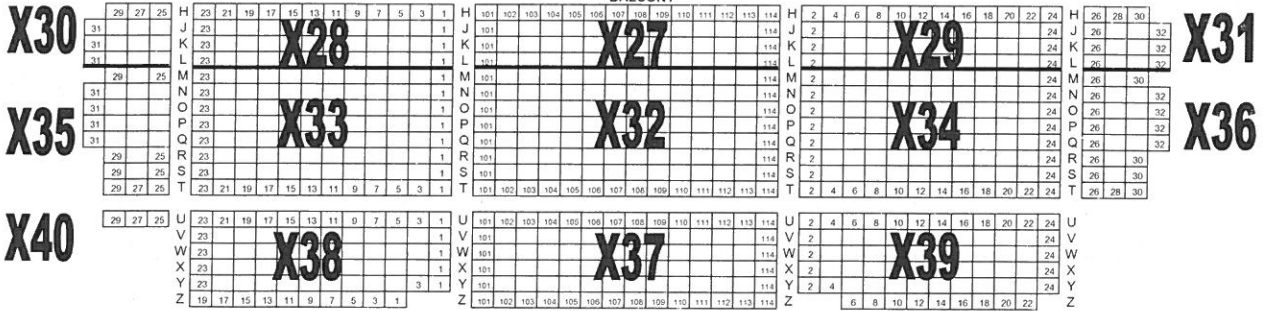
ORCHESTRA

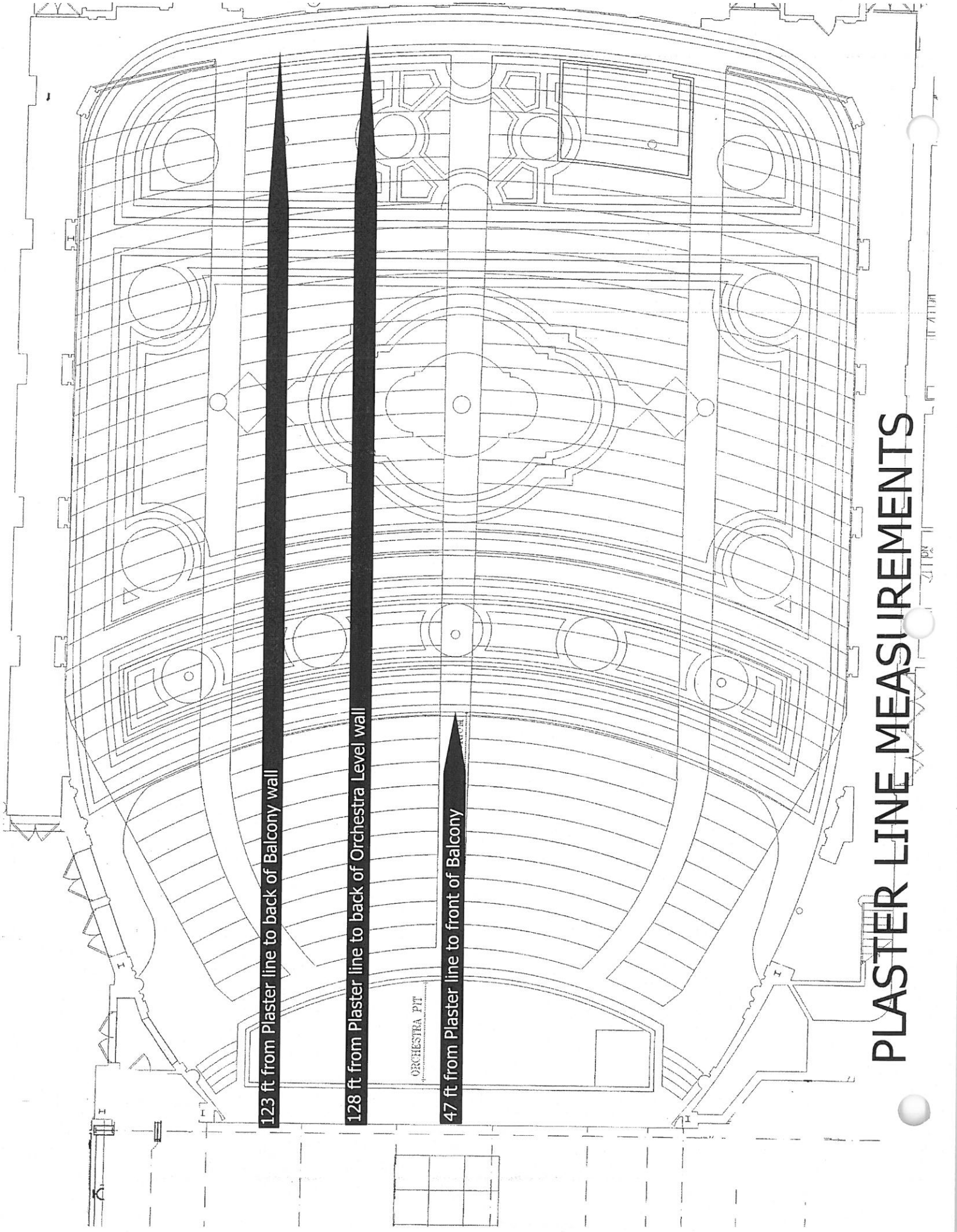


LOGE



BALCONY





123 ft from Plaster line to back of Balcony wall

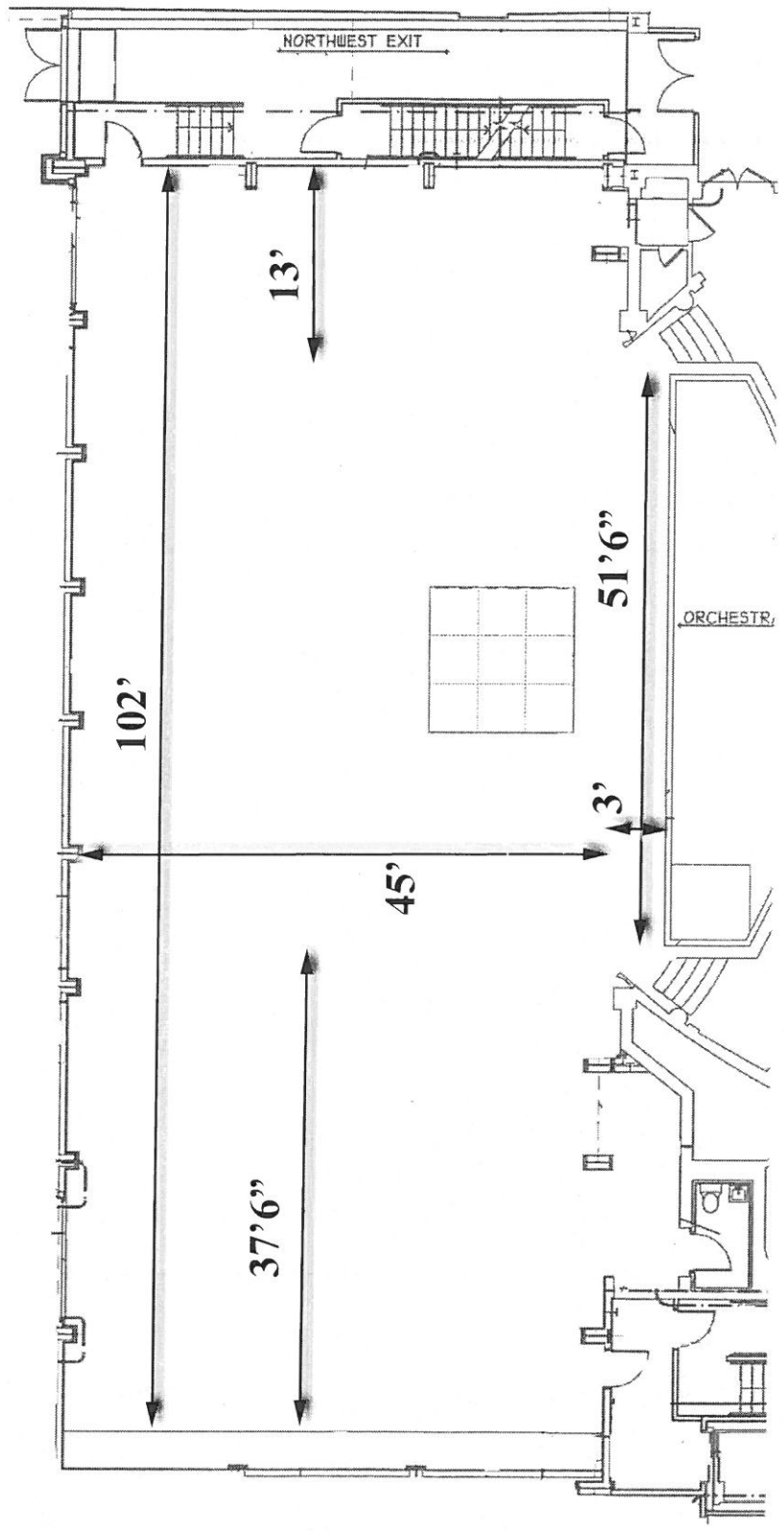
128 ft from Plaster line to back of Orchestra Level wall

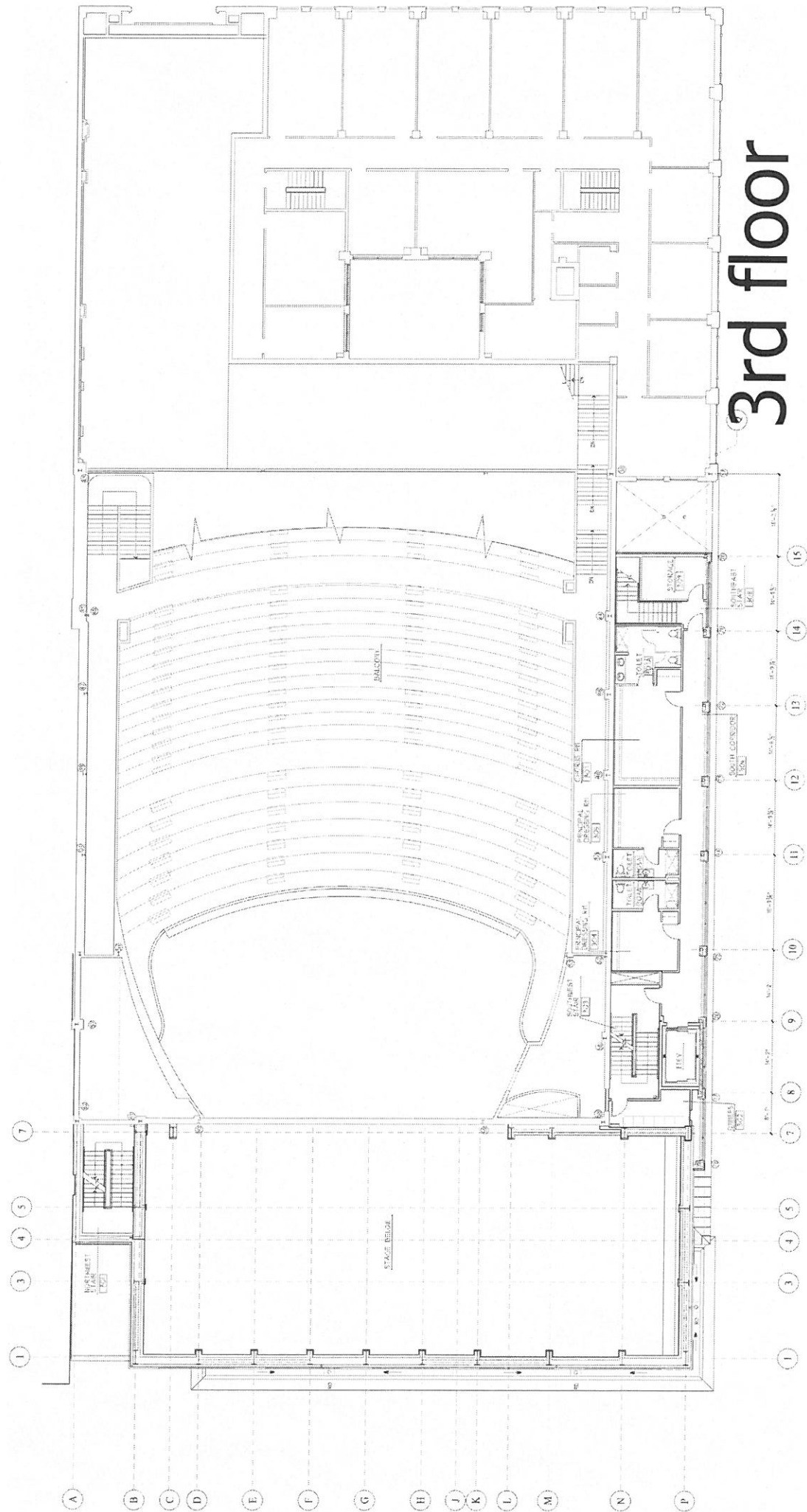
ORCHESTRA PIT

47 ft from Plaster line to front of Balcony

PLASTER LINE MEASUREMENTS

STAGE DIMENSIONS W/ MEASUREMENTS





3rd floor

A B C D E F G H I J K L M N P

1 2 3 4 5 6 7 8 9 10 11 12 13 14 15

REST AREA
L251

STAGE BRIDGE

BALCONY

STAIRWAY
L253

RESTROOM
L254

TOILET
L255

STAIRWAY
L256

RESTROOM
L257

TOILET
L258

STAIRWAY
L259

RESTROOM
L260

TOILET
L261

STAIRWAY
L262

RESTROOM
L263

TOILET
L264

STAIRWAY
L265

RESTROOM
L266

TOILET
L267

STAIRWAY
L268

RESTROOM
L269

TOILET
L270

STAIRWAY
L271

RESTROOM
L272

TOILET
L273

STAIRWAY
L274

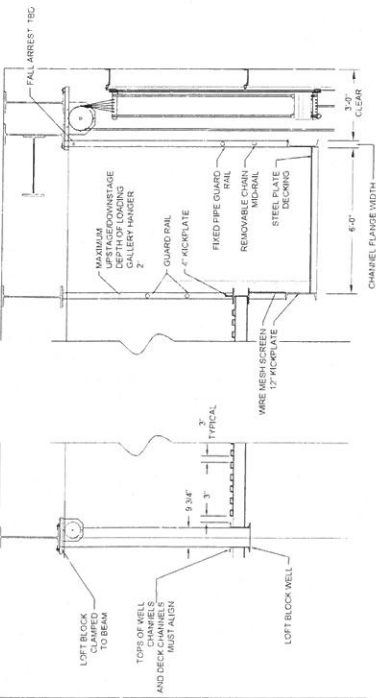
RESTROOM
L275

TOILET
L276

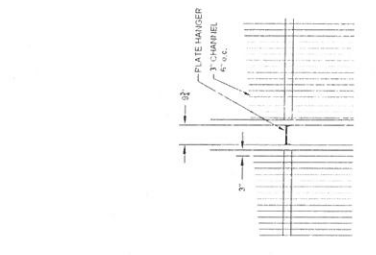
STAIRWAY
L277

RESTROOM
L278

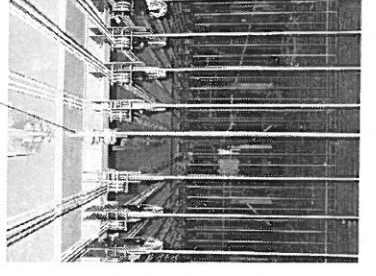
TOILET
L279



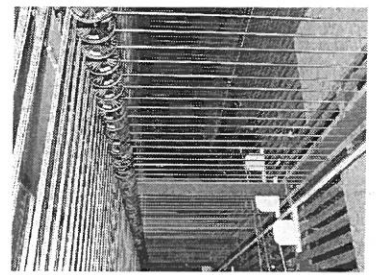
1 HEAD BLOCK AND LOFT BLOCK BEAMS & LOADING GALLERY
SCALE 1/2" = 1'-0"



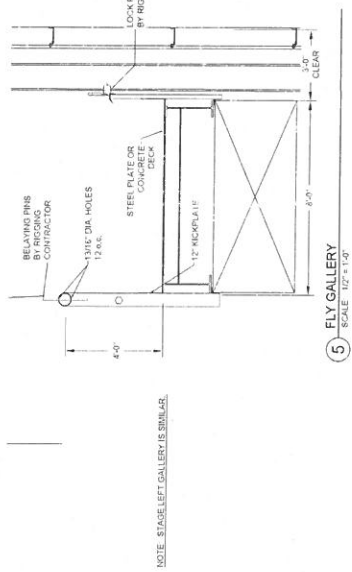
2 PLAN - LOFT BLOCK WELLS
SCALE 1/2" = 1'-0"



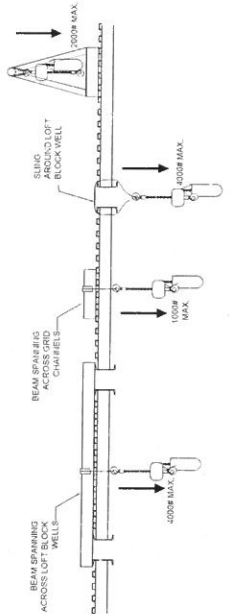
3 PHOTO - GRID HANGER
SCALE NIS



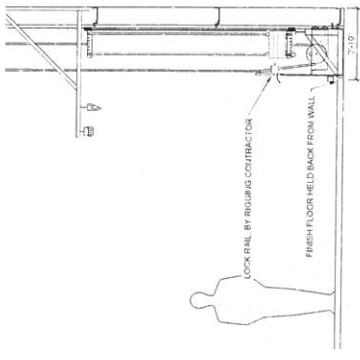
4 PHOTO - GRID IRON
SCALE NIS



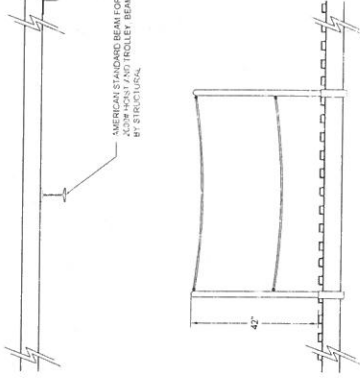
5 FLY GALLERY
SCALE 1/2" = 1'-0"



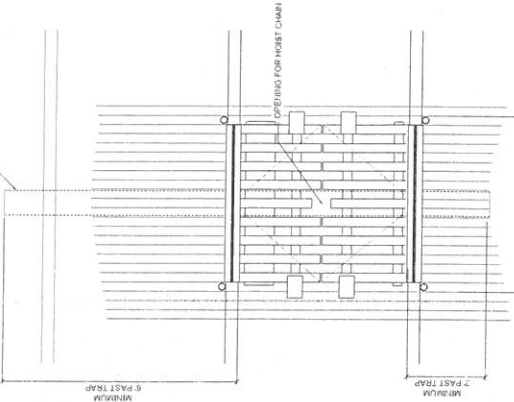
6 CHAIN HOIST RIGGING OPTIONS ON GRIDIRON
SCALE 1/2" = 1'-0"



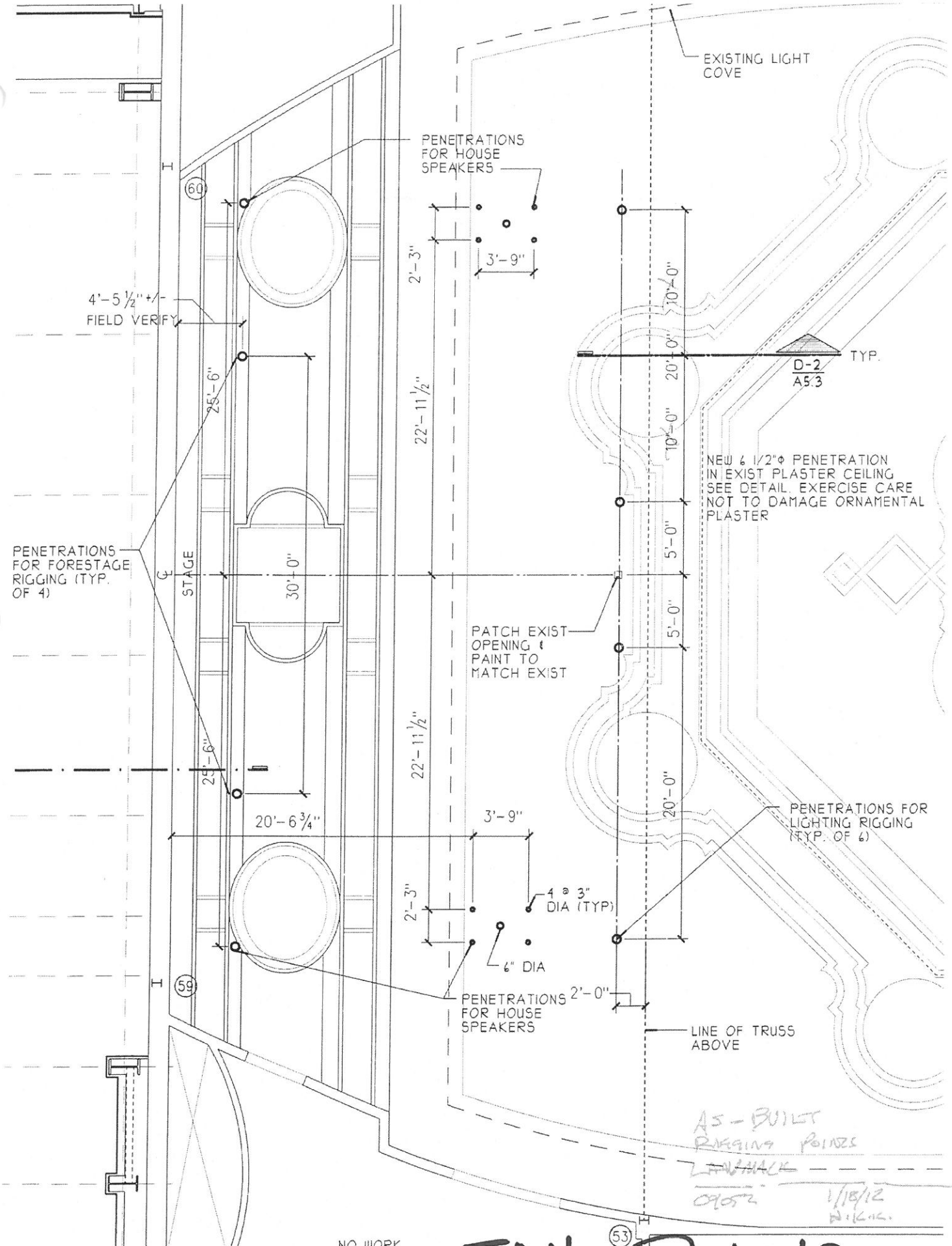
7 LOWER LOCK RAIL
SCALE 1/2" = 1'-0"



8 SECTION - GRID TRAP
SCALE 3/4" = 1'-0"



9 PLAN - GRID TRAP - BY RIGGING CONTRACTOR
SCALE 3/4" = 1'-0"



EXISTING LIGHT COVE

PENETRATIONS FOR HOUSE SPEAKERS

4'-5 1/2" +/-
FIELD VERIFY

60

2'-3"
3'-9"

22'-11 1/2"

10'-0"
20'-0"
10'-0"

D-2
A53 TYP.

NEW 6 1/2" Ø PENETRATION
IN EXIST PLASTER CEILING
SEE DETAIL. EXERCISE CARE
NOT TO DAMAGE ORNAMENTAL
PLASTER

PENETRATIONS FOR FORESTAGE RIGGING (TYP. OF 4)

STAGE

25'-6"

30'-0"

PATCH EXIST
OPENING &
PAINT TO
MATCH EXIST

22'-11 1/2"

5'-0"
5'-0"

PENETRATIONS FOR LIGHTING RIGGING (TYP. OF 6)

25'-6"

20'-6 3/4"

3'-9"

20'-0"

2'-3"

4 @ 3" DIA (TYP)

6" DIA

PENETRATIONS FOR HOUSE SPEAKERS

2'-0"

LINE OF TRUSS ABOVE

59

AS-BUILT
RIGGING POINTS
LAWNACK

09052 1/18/12
DICKINS

NO WORK

FOH ⁵³ Points

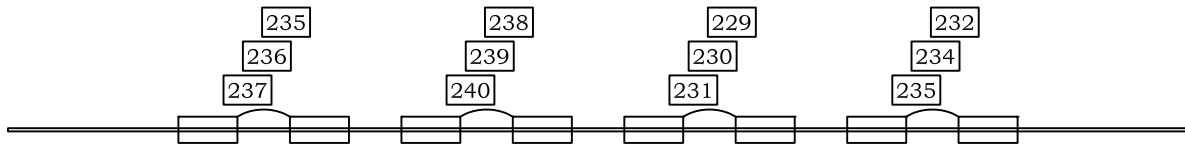
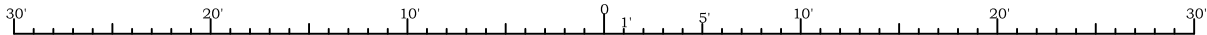


LINE SET SCHEDULE

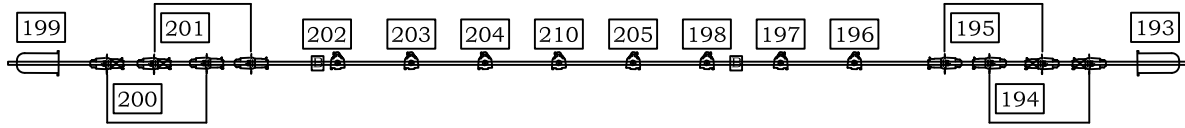
Updated March 18, 2018

#	Description	Distance from 0"-0"	Distance from Stage Edge
FC	Fire Curtain	0'-4"	4'-7"
HC	House Curtain	2'-3"	6'-6"
1	Border	3'-1"	7'-4"
2	Legs	3'-7"	7'-10"
3		4'-1"	8'-4"
4		4'-7"	8'-10"
5	1st Electric	5'-1"	9'-4"
6		5'-7"	9'-10"
7		6'-1"	10'-4"
8	Border	6'-7"	10'-10"
9	Legs	7'-1"	11'-4"
10	Projection Screen	7'-7"	11'-10"
11		8'-1"	12'-4"
12		8'-7"	12'-10"
13		9'-1"	13'-4"
14		9'-7"	13'-10"
15		10'-1"	14'-4"
16	Border	10'-7"	14'-10"
17	Legs	11'-1"	15'-4"
18		11'-7"	15'-10"
19	2nd Electric	12'-1"	16'-4"
20		12'-7"	16'-10"
21		13'-1"	17'-4"
22		13'-7"	17'-10"
23		14'-1"	18'-4"
24		14'-7"	18'-10"
25		15'-1"	19'-4"
26		15'-7"	19'-10"
27		16'-7"	20'-10"
28		17'-1"	21'-4"
29		17'-7"	21'-10"
30		18'-1"	22'-4"
31	Border	18'-7"	22'-10"
32	Legs	19'-1"	23'-4"
33		19'-7"	23'-10"
34	3rd Electric	20'-1"	24'-4"
35		20'-7"	24'-10"
36		21'-1"	25'-4"
37		21'-7"	25'-10"
38		22'-1"	26'-4"

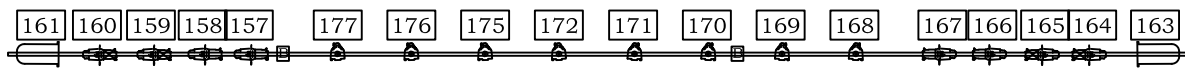
#	Description	Distance from 0"-0"	Distance from Stage Edge
39		22'-7"	26'-10"
40		23'-7"	27'-10"
41		24'-1"	28'-4"
42		24'-7"	28'-10"
43		25'-1"	29'-4"
44	Border	25'-7"	29'-10"
45	Legs	26'-1"	30'-4"
46		26'-7"	30'-10"
47	4th Electric	27'-1"	31'-4"
48		27'-7"	31'-10"
49		28'-1"	32'-4"
50		28'-7"	32'-10"
51		29'-1"	33'-4"
52		29'-7"	33'-10"
53		30'-1"	34'-4"
54	Border	31'-1"	35'-4"
55	Legs	31'-7"	35'-10"
56	Full Black Out	32'-1"	36'-4"
57		32'-7"	36'-10"
58		33'-1"	37'-4"
59		33'-7"	37'-10"
60	Cyclorama	34'-1"	38'-4"
61		34'-7"	38'-10"
62		35'-1"	39'-4"
63		35'-7"	39'-10"
64		36'-1"	40'-4"
65		36'-7"	40'-10"
66		37'-1"	41'-4"
67		37'-7"	41'-10"
68		38'-1"	42'-4"
69		38'-7"	42'-10"
70		39'-1"	43'-4"
71		39'-7"	43'-10"
72		40'-1"	44'-4"
73		40'-7"	44'-10"
74		41'-1"	45'-4"
75		41'-7"	45'-10"
76		42'-1"	46'-4"
77	Curtain Track	42'-7"	46'-10"
78	Movie Screen	43'-1"	47'-4"



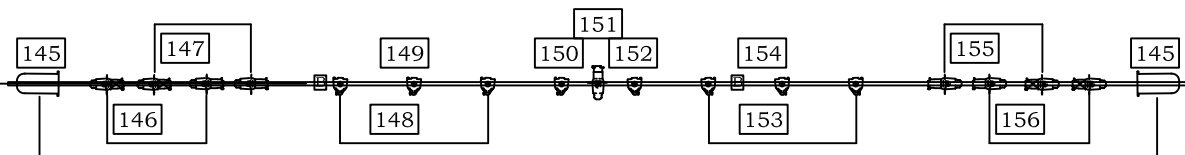
4th ELECTRIC



3rd ELECTRIC



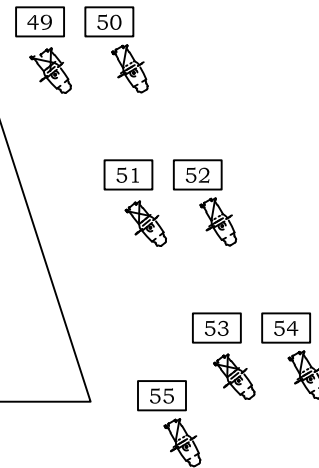
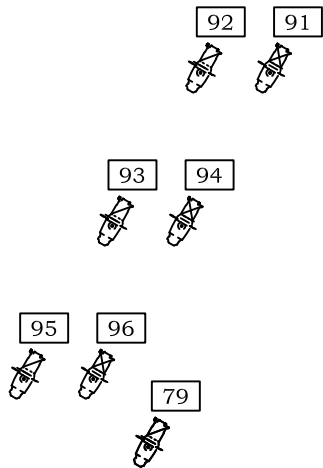
2nd ELECTRIC



1st ELECTRIC

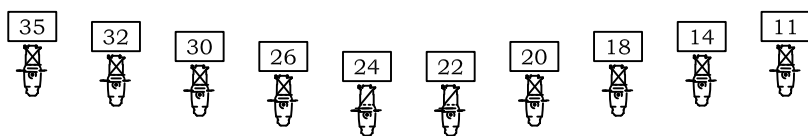
BOX BOOM HL

BOX BOOM HR

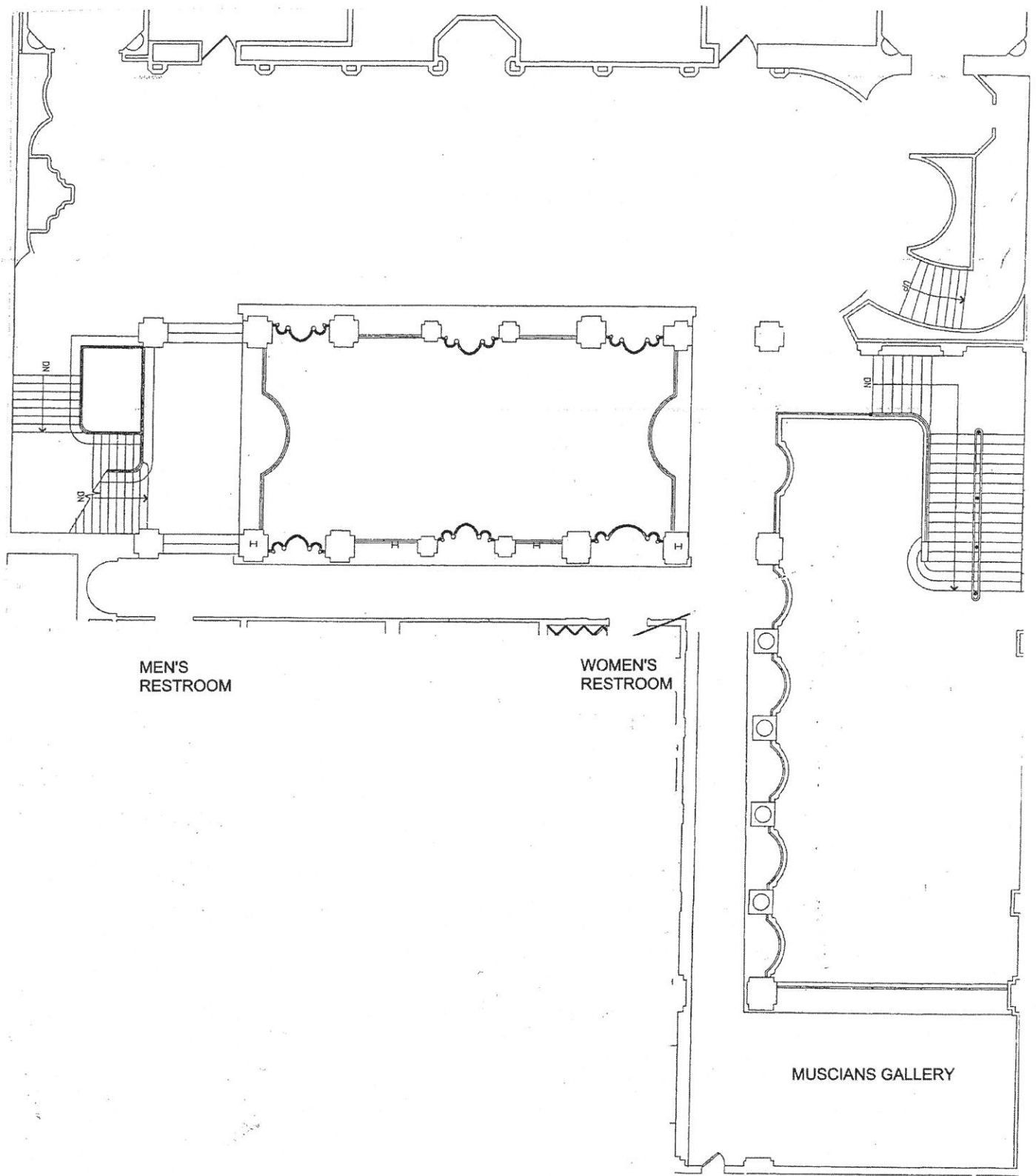


	Alt 6x9		S4 Par
	S4 19d-blue		Par 64
	S4 26d-orange		Striplights
	S4 36d-white		Soco breakout
	Dimmer #		

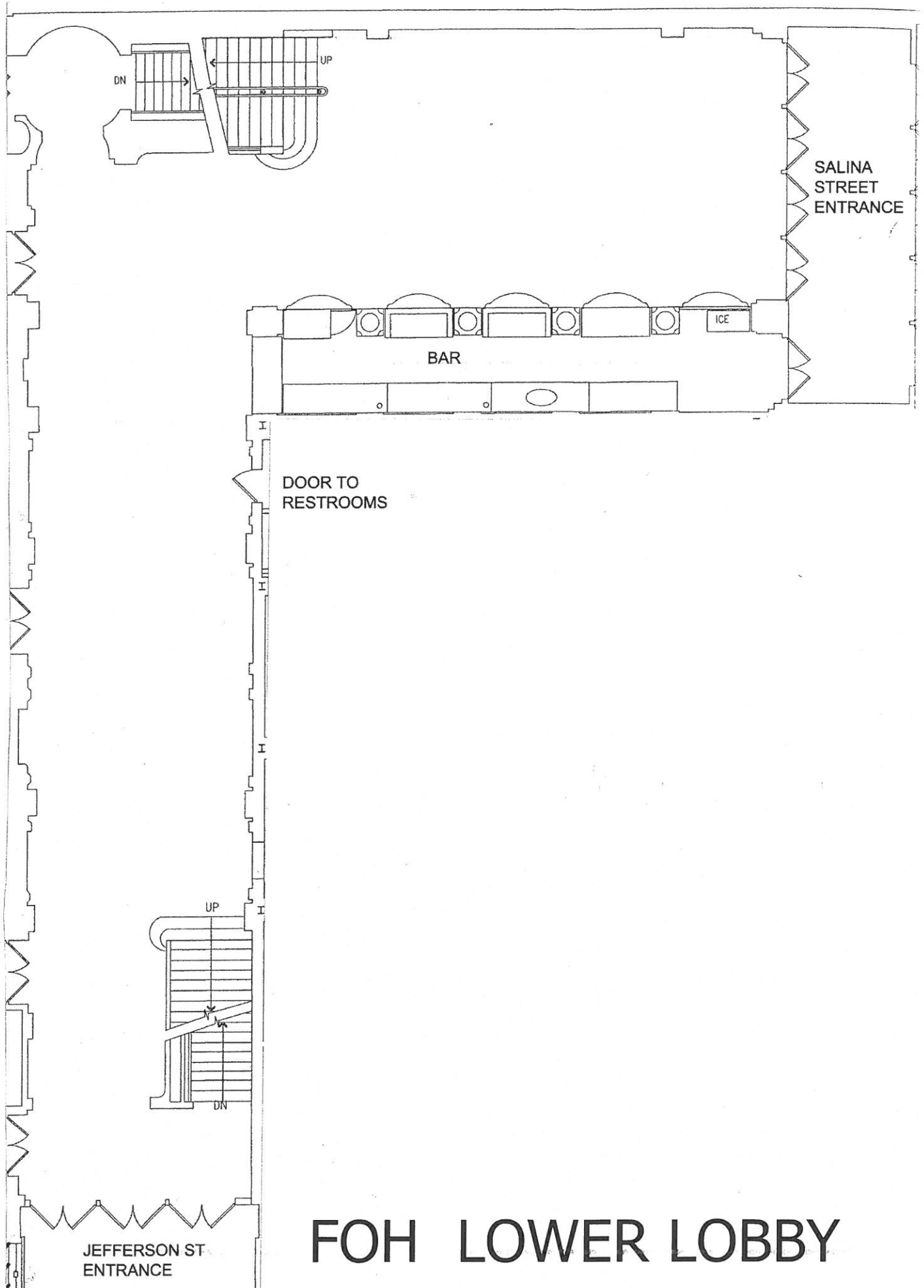
KEY



BALCONY RAIL



UPPER LOBBY



SALINA
STREET
ENTRANCE

BAR

DOOR TO
RESTROOMS

ICE

DN

UP

UP

DN

JEFFERSON ST.
ENTRANCE

FOH LOWER LOBBY

WALNUT ROOM LAYOUT

